

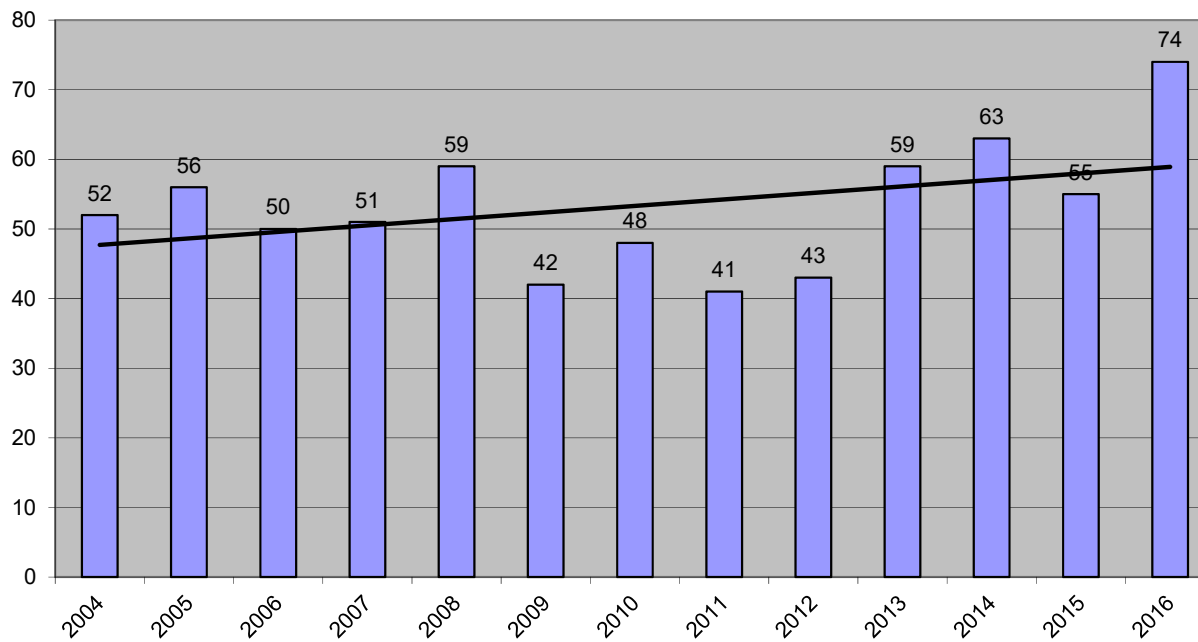


Mitigating Motorcycle Crashes Through Training

TROOPER JIM STEWART

Statewide Stats

Actual Motorcycle Fatalities
Includes Mopeds



Actual MC Fatalities
Linear (Actual MC Fatalities)

$$y = 0.9341x + 46.769$$
$$R^2 = 0.1544$$

Fatalities – County (no mopeds)

▶ Clark

▶ 2015 - 32

▶ 2016 - 49

▶ + 53%

▶ Washoe

▶ 2015 - 7

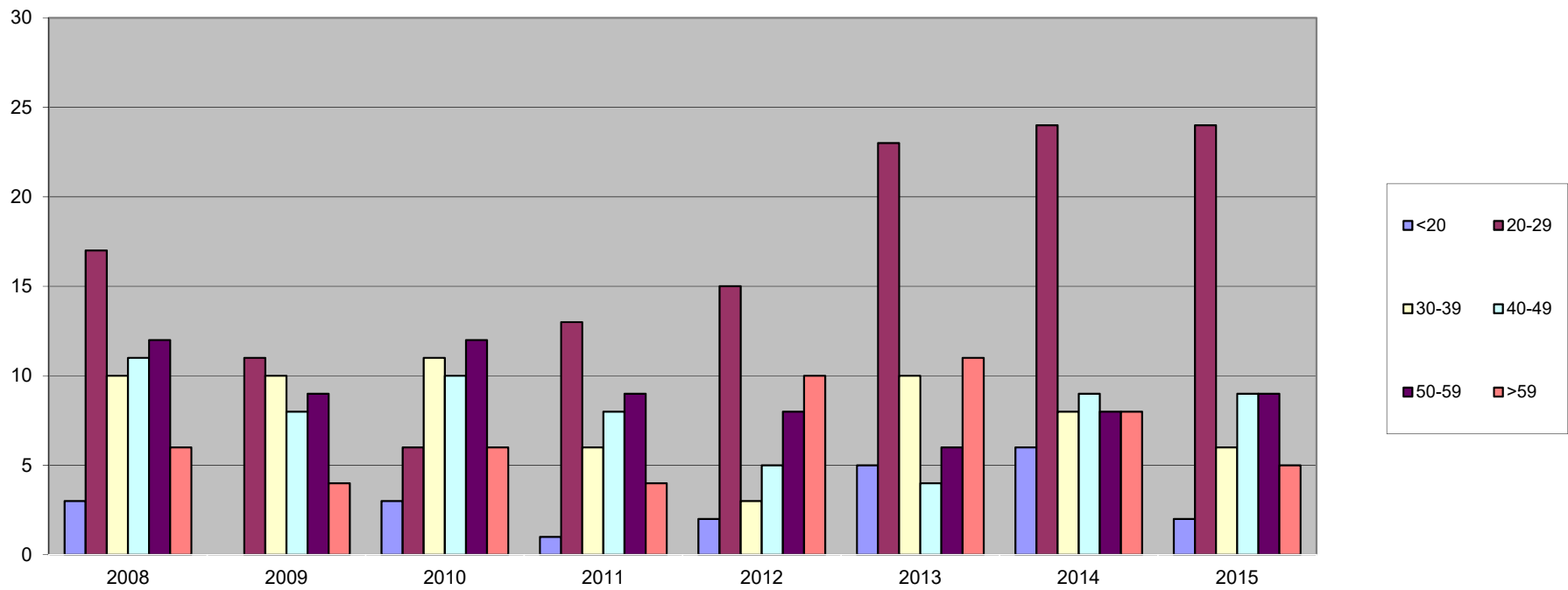
▶ 2016 - 8

▶ + 14%



Fatalities by Age

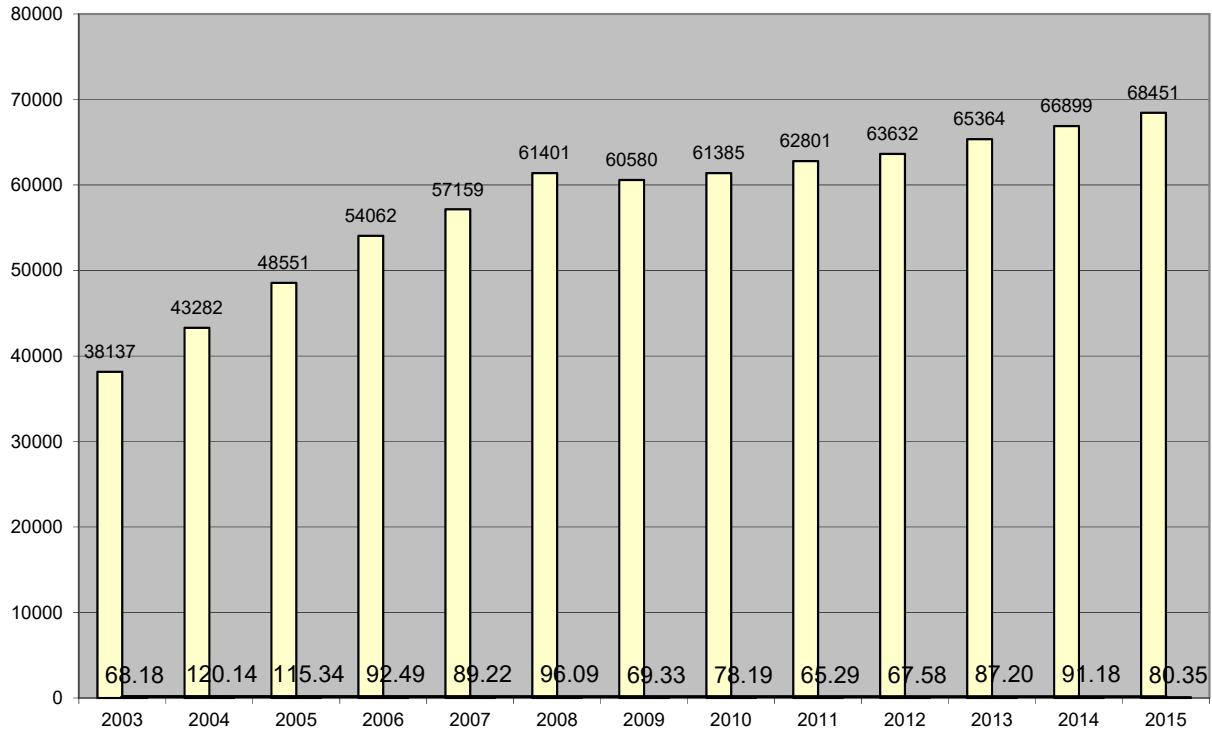
Motorcyclist Fatalities by Age



Registered Motorcycles

PV1

Actual Motorcyclist Fatalities per 100k Registered Motorcycles



Slide 5

PV1 Increase in registered MC
Peter Vanderaa, 1/26/2017

Riders Involved in a Fatal Crash (Nevada – 2015)

- ▶ 28% of Motorcyclists – either no license or no motorcycle endorsement
- ▶ 52% of Motorcyclists Under Age 25 – either no license or not motorcycle endorsement

Fatalities – Most Factors



- ▶ Impaired
 - ▶ Speed
 - ▶ Reckless
 - ▶ Disregard Control Device
 - ▶ Fail to Maintain Lane
- 

Impaired Fatalities



- ▶ Clark – 2015
 - ▶ 65 % Impaired
 - ▶ Alcohol – 5
 - ▶ Drugs Only – 16
 - ▶ Drugs and Alcohol – 7

- ▶ Washoe – 2015
 - ▶ 57% Impaired
 - ▶ Alcohol – 1
 - ▶ Drugs only – 1
 - ▶ Drugs and Alcohol - 2

NEVADA RIDER PROGRAM

- ▶ CLASSROOM
- ▶ RIDING
- ▶ ENDORSEMENT



Nevadarider.com



▶ Jim Stewart—Nevada Rider